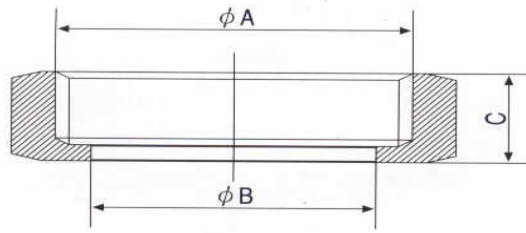


### BSM UNION CONTINUED

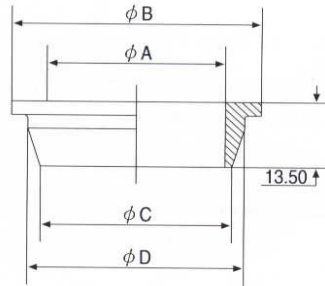
#### RJT Hexagonal Nut RJT-13H

Size	A		B	C
1.0"	42.266 x 8TPI	WHIT	33.45	22.2
1.5"	54.966 x 8TPI	WHIT	46	22.2
2.0"	67.920 x 6TPI	WHIT	58.67	22.2
2.5"	80.620 x 6TPI	WHIT	71.4	22.2
3.0"	93.320 x 6TPI	WHIT	84.1	22.2
4.0"	119.0 X6TPI	WHIT	109.7	22.2



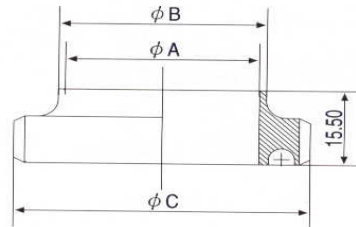
#### CIP Welding Liner CIP-14

Size	A	B	C	D
1.0"	22.2	41.3	25.8	32.5
1.5"	34.9	54	38.5	45.2
2.0"	47.6	66.7	51.2	57.9
2.5"	60.3	79.4	63.9	70.6
3.0"	73	92.1	76.6	83.3
4.0"	97.6	117.5	102.2	108.7



#### CIP Welding Male CIP-15

Size	A	B	C		
1.0"	22.2	25.65	45.72	x 8T	WHIT
1.5"	34.9	38.35	58.42	x 8T	WHIT
2.0"	47.6	51.05	72.72	x 6T	WHIT
2.5"	60.3	63.75	85.42	x 6T	WHIT
3.0"	73	76.45	98.12	x 6T	WHIT
4.0"	97.6	101.85	123.52	x 6T	WHIT



#### Seal Ring

Size	A	B
1"	33.3	6.6
1.5"	46	6.6
2"	58.7	6.6
2.5"	71.4	6.6
3"	84.1	6.6
4"	109.5	6.6

