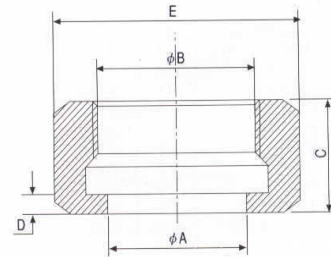


3 A UNION

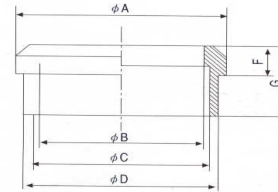
3A Hexagonal Nut 3A-13H

Size	A	A	C	D	E
1"	30.3	38.02 ACME 8TPI	23	4	46
1.5"	43.4	51.54 ACME 8TPI	24.6	5.5	61.1
2"	56.5	65.05 ACME 8TPI	27	5.5	76.2
1.5"	69.6	78.56 ACME 8TPI	29.6	5.5	91.3
3"	82.7	92.08 ACME 8TPI	32.5	6.4	106.4
4"	108.9	120.14 ACME 6TPI	38.1	6.4	137.6



3A -Plain Recssless Liner 3A-14R

Size	A	B	C	D	F	G
1"	33.3	22.2	25.5	29.5	7.9	19.1
1.5"	46.8	34.9	38.2	42.6	8.7	22.2
2"	60.3	47.6	50.9	55.7	10.3	24.6
2.5"	73.8	60.3	63.6	68.8	11.1	27
3"	87.3	73	76.3	81.9	11.9	28.6
4"	114.3	97.6	101.7	108.1	14.3	31.8



3A Plain Recessless Male 3A-15R

Size	A	B	C	D	E	F
1"	37.13 ACME 8TPI	22.2	25.5	29.5	14.3	20.6
1.5"	50.65 ACME 8TPI	34.9	38.2	42.6	14.3	22.2
2"	64.16 ACME 8TPI	47.6	50.9	55.7	15.1	26.2
2.5"	77.67 ACME 8TPI	60.3	63.6	68.8	18.3	28.6
3"	91.19 ACME 8TPI	73	76.3	81.9	19.1	31.8
4"	119.25 ACME 6TPI	97.6	101.7	108.1	22.2	34.9

